

CERTIFICATE OF LOCATION OF GOVERNMENT CORNER

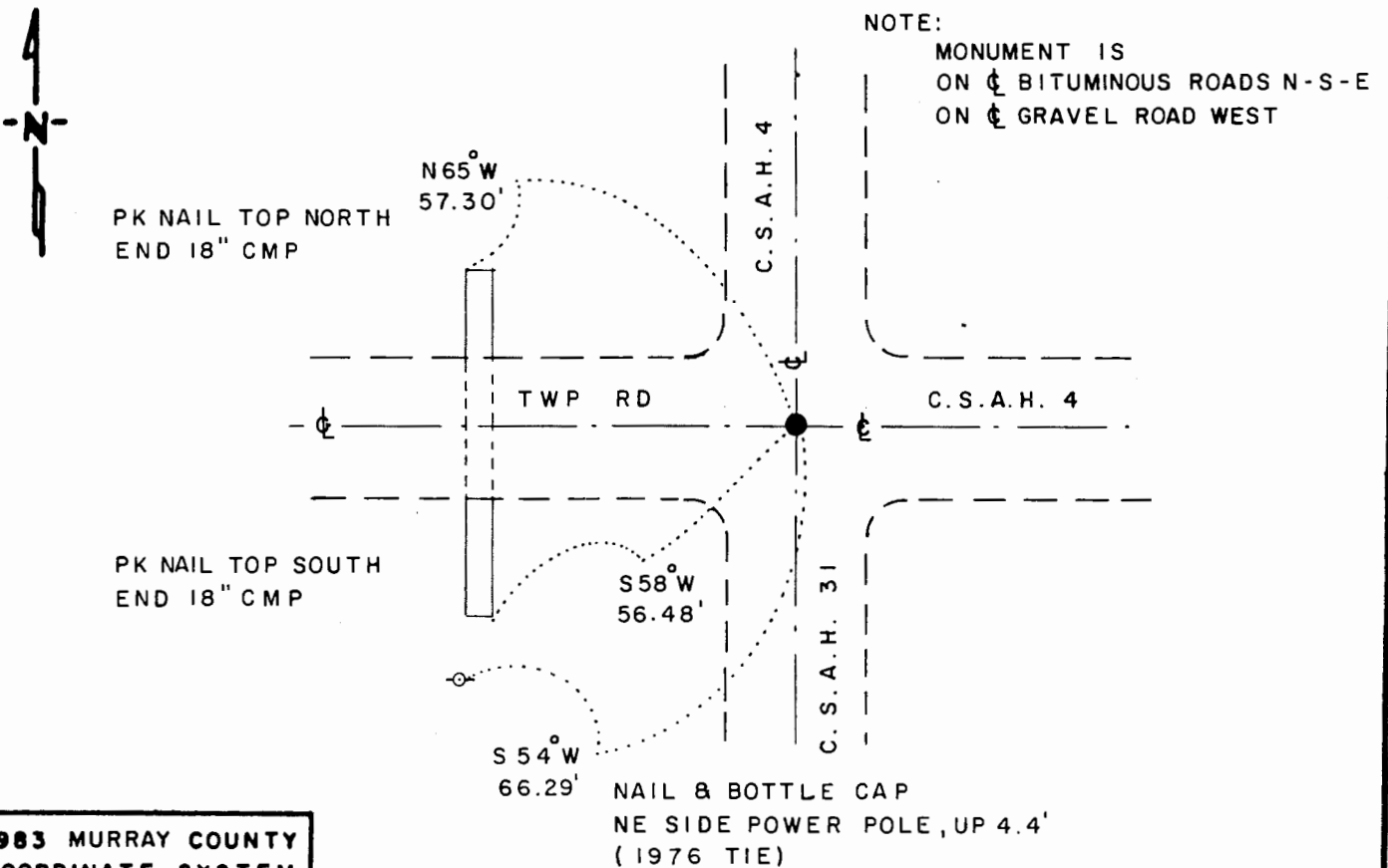
NORTHEAST Corner of Section 17, Township 105 N, Range 41 W, 5th P.M.

STATE OF MINNESOTA, County of MURRAY

At the corner location shown on the sketch

- On 3-21-90 found a 5/8" x 10" IRON ROD, DOWN 0.1', OVER 6" x 6" SQUARE CONCRETE MONUMENT WITH "X" ON TOP, DOWN 17"
 left monument as found, lowered monument, removed monument (explain)
- On 3-21-90 placed a 1 1/4" x 1 1/4" x 10" PERFORATED STEEL TUBE WITH ALUMINUM CAP STAMPED "DNR SURVEY MARKER", OVER CONC. MONU., DOWN 0.2'

SKETCH OF REFERENCE TIES



NOTE:
 MONUMENT IS
 ON ϕ BITUMINOUS ROADS N-S-E
 ON ϕ GRAVEL ROAD WEST

1983 MURRAY COUNTY
 COORDINATE SYSTEM
 N = 121,332.843
 E = 495,424.698

BEARINGS OBSERVED WITH COMPASS

Statement of evidence relative to this corner location is on back of page

J.B.M. 4-24-90
 WMA 1488

I hereby certify that this document and the data contained herein was prepared by me or under my direct supervision.

Lowell R. Pommeroy Jr. 5-10-90
SIGNATURE DATE

Registration No. 17005

- Land Surveyor, Professional Engineer
- County Surveyor, County Engineer

OFFICE OF THE COUNTY RECORDER

County of _____

I hereby certify that this document was filed in the Co. Recorders office at _____ M. on the _____ day of MAY 16 1990 A.D., 19 _____

County Recorder *James V. Johnson*

By _____, Deputy

DOCUMENT NO. _____

The DNR Bureau of Engineering contacted the following for survey information:

Secretary of State's Office
Murray County Recorder's Office
Murray County Highway Engineer's Office
Bell Surveying, Inc., of Worthington
Madsen Land Surveying of Fairmont

- 1861 U.S. General Land Office notes obtained from the Secretary of State's Office show corner marked with a post in a mound with trench and pits as per instructions.
- 1898 Surveyor's Record Book A, page 76, obtained from the County Recorder's Office contains a survey by J. W. Woolstencroft. Survey shows a stone in grade at corner but does not indicate if found or set.
- 1934 Surveyor's Record Book obtained from the County Highway Engineer's Office shows a concrete stone at corner but does not indicate if found or set. The following ties are shown to corner:
R.P. tack in corner fence post, southwest, 46.6 feet
R.P. tack in corner fence post, northwest, 47.3 feet
- No Date Surveyor's Record Book obtained from the County Highway Engineer's Office shows a concrete stone down 18 inches at corner, but does not indicate if found or set. The following ties are shown to corner:
3" below gravel surface
R.P. tack in power pole, southwest, 66.56 feet
chiseled "X" on end of culvert, northwest, 53.82 feet
reds in blacktop, east, 100 feet, 200 feet, 300 feet
- 1949 Construction Plan Sheet Number 3 of 19 for State Aid Road 10, now County State Aide Highway 4, obtained from the County Highway Engineer's Office shows a monument at corner but does not give a description of it. The corner is shown:
at Station 0+00
at the intersection of roads north, south, east and west
2646.0 feet from the north quarter corner of Section 16
- 1975 Construction Plan Sheet No. 11 of 33 for County State Aid Highway No. 31, obtained from the County Highway Engineer's Office, shows that a concrete monument was found at corner. A steel pin was set over the concrete monument in existing bituminous surface and the following ties were taken:
at Station 205+52.29
at the intersection of roads north, south, east and west
2638.09 feet from the east quarter corner of Section 17
- 1976 Government Corner Tie Book obtained from the County Highway Engineer's Office shows that a concrete monument was found down 3 inches at corner. A steel pin was set over the concrete monument and the following ties were taken:
nail and cap in power pole, southwest, 66.56 feet
chiseled "X" on end of culvert, northwest, 53.82 feet
reds in bituminous surface, east, 100 feet, 200 feet, 300 feet
- 1980 A Certificate of Survey and field notes obtained from Madsen Land Surveying, surveyed by Gary Martin, RLS #12967, show that a 1/2 inch iron bar was found at corner per County Highway records. The corner is shown:
2643.36 feet from the north quarter corner of Section 16
- 1990 March, DNR Bureau of Engineering found a 5/8 inch diameter by 10 inch long iron rod at corner. Removed the iron rod and found a 6" by 6" concrete monument with an "X" on top down 17 inches. Discarded the found iron rod and set a DNR Survey Marker over the concrete monument. Searched for and found record ties as shown on the sketch of reference ties. The concrete monument was found to be:
at the intersection of roads north, south, east and west
2643.25 feet from the north quarter corner of Section 16
2637.83 feet from the east quarter corner of Section 17

Analysis of the above information led the DNR Bureau of Engineering to conclude that the found concrete monument marks the location of the corner.